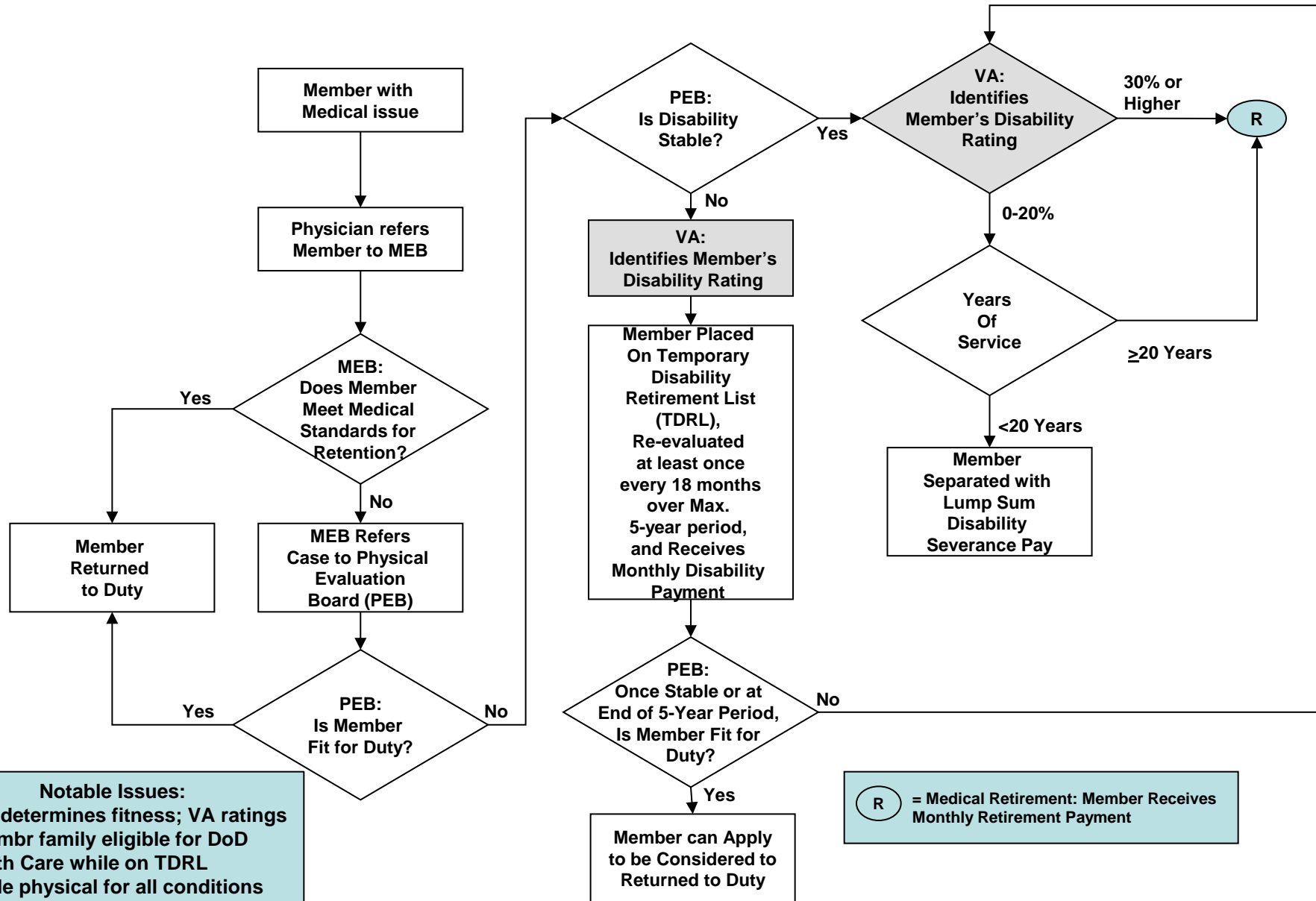


# DoD/VA Integrated Disability Evaluation System



# Concurrent Receipt Eligibility

	<b>Combat Related Disability</b>	<b>Non-Combat Related Disability</b>
20+ years of service and 10-40% disabled	Yes	No
20+ years of service and 50% or greater disabled	Yes	Yes
Less than 20 years of service with any disability rating	Yes	No (unless TERA retiree)